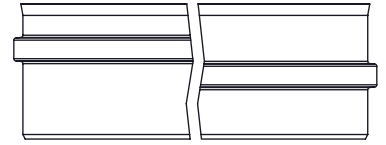
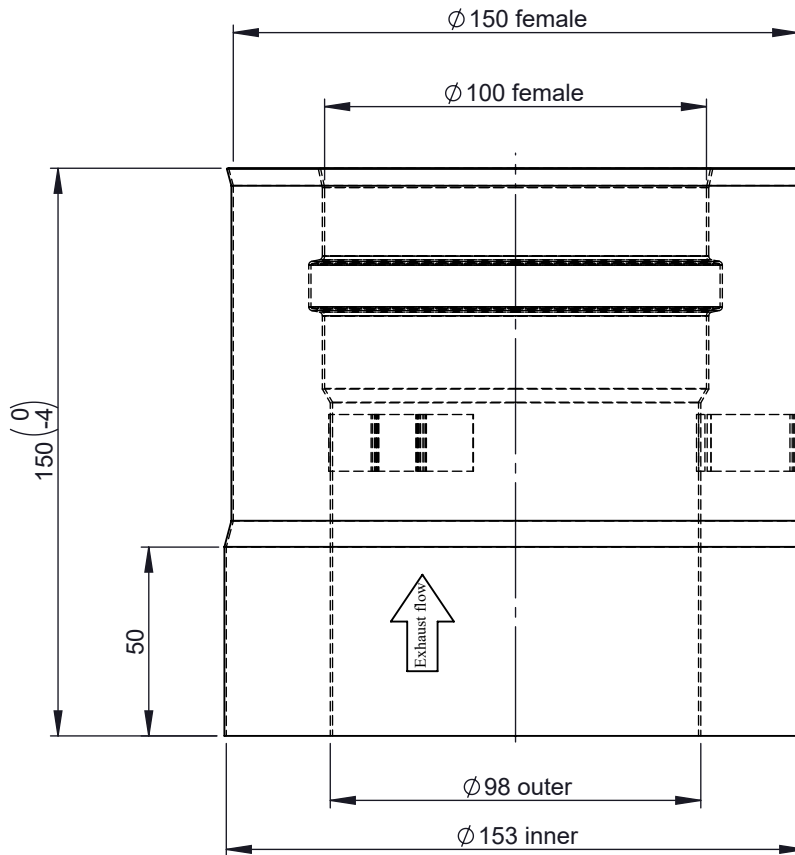


A

Possible type of female part "FU"



B

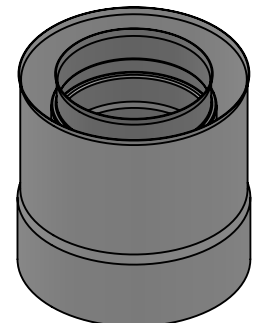


C

D

E

1:5 (100-150)



kg

0,53

notes:

DIN ISO 13920 Tolerances B

revisions-no.

**Jeremias**<sup>®</sup>  
CHIMNEY SYSTEMS

scale

1:5

format

A4

sheet

1 of 1

F

	date	name
drawn by	02.01.20	JMA
checked by	02.01.20	SWA
approved by	02.01.20	JWY
modified by		

description **Adaptor  $\phi$  (98-153)/( $\phi$  100-150)  
H-TWIN**

code **H-TWIN 182**

drawing-no. **03-03-3200-000**

